

ABOUT ATS:

Over the last two decades, Applied Training Solutions (ATS), has been a trusted partner to more than one hundred state and federal institutions supporting their crisis response and consequence management training requirements. As a leading provider of training and operational support technologies, ATS delivers leading edge technology and innovative solutions building resilient organizations. We offer technology and services to increase effectiveness in planning, training, and operations.

ATS is a service-disabled, Veterans-owned, small business offering technology and services to increase planning, training, and operations.

ATS

Applied Training Solutions

Hampton, VA | Greensburg, PA



info@appliedtrg.com
appliedtrg.com



Founded 2009
Service Disabled Veteran Owned
Small Business (SDVOSB)
ISO 9001:2015



Inc. 5000
2017 | 2018 | 2020

ATS SIM

Capabilities and Features

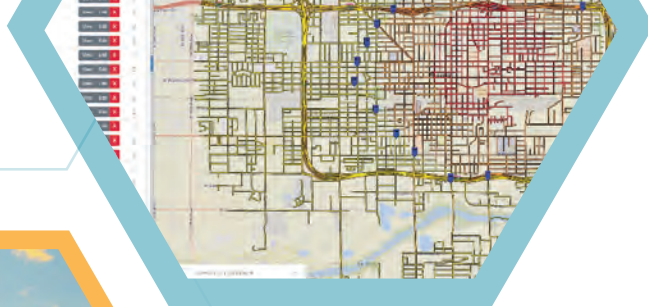


ATS SIM

Disasters, natural or manmade, can strike at any time. Preparing for disasters requires an all-hazards approach by emergency management officials, starting with training and exercise. Over the years, exercises have evolved into complex events using new technologies to simulate realistic events, allow for multiple partners, and track actions for comprehensive after-action reports.

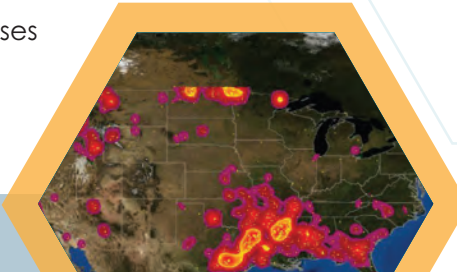
ATSim is a platform that establishes an exercise lifecycle foundation for collaborative planning and realistic exercise design.

ATSim is changing the way disaster managers train and exercise.



CAPABILITIES & FEATURES

- Web-based constructive simulation for emergency management training
- Tailored scenarios to test decision-making processes and validate response plans



- Multi-faceted disaster selection: natural disasters; pandemics; terrorist attacks; active shooters; and chemical, biological, radiological, and nuclear scenarios
- Customized organizational resources simulating personnel, assets, and capabilities
- Authoritative models and simulated disaster effects
- Reuse and customize all exercises after you have built them once
- Master scenario events list (MSEL) tool
- Command and Control, common operating (COP), and GIS data integration

